

LEGEND:

- - PERMANENT REFERENCE MONUMENT, PSM #4213
- - PERMANENT CONTROL POINT, PSM #4213
- ∠ - DELTA ANGLE
- B.E. - BUFFER EASEMENT
- C. - CENTERLINE
- D.B. - DEED BOOK
- D.E. - DRAINAGE EASEMENT
- L. - ARC LENGTH
- L.A.E. - LIMITED ACCESS EASEMENT
- L.M.A.E. - LAKE MAINTENANCE ACCESS EASEMENT
- L.M.E. - LAKE MAINTENANCE EASEMENT
- L.W.D.D. - LAKE WORTH DRAINAGE DISTRICT
- N.R. - NOT RADIAL
- N.T.S. - NOT TO SCALE
- O.E. - OVERHANG EASEMENT
- O.R.B. - OFFICIAL RECORD BOOK
- P.B. - PLAT BOOK
- PGS. - PAGES
- P.S.M. - PROFESSIONAL SURVEYOR AND MAPPER
- R. - RADIUS
- R/W - RIGHT-OF-WAY
- S.T. - SURVEY TIE
- U.E. - UTILITY EASEMENT
- N 737648.0171  
E 905258.2326 - DENOTES STATE PLANE COORDINATES
- TRACT 22 - DENOTES TRACT NO. OF UNDERLYING PLAT (PLAT BOOK 1, PAGE 102)

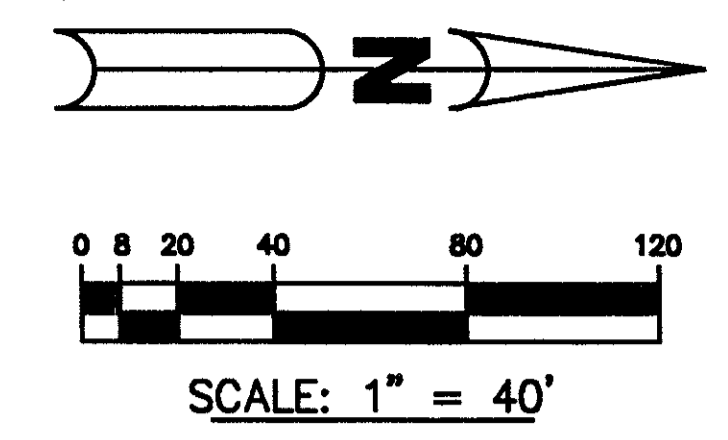
A PLANNED UNIT DEVELOPMENT

# CAPELLA P.U.D. - PLAT ONE

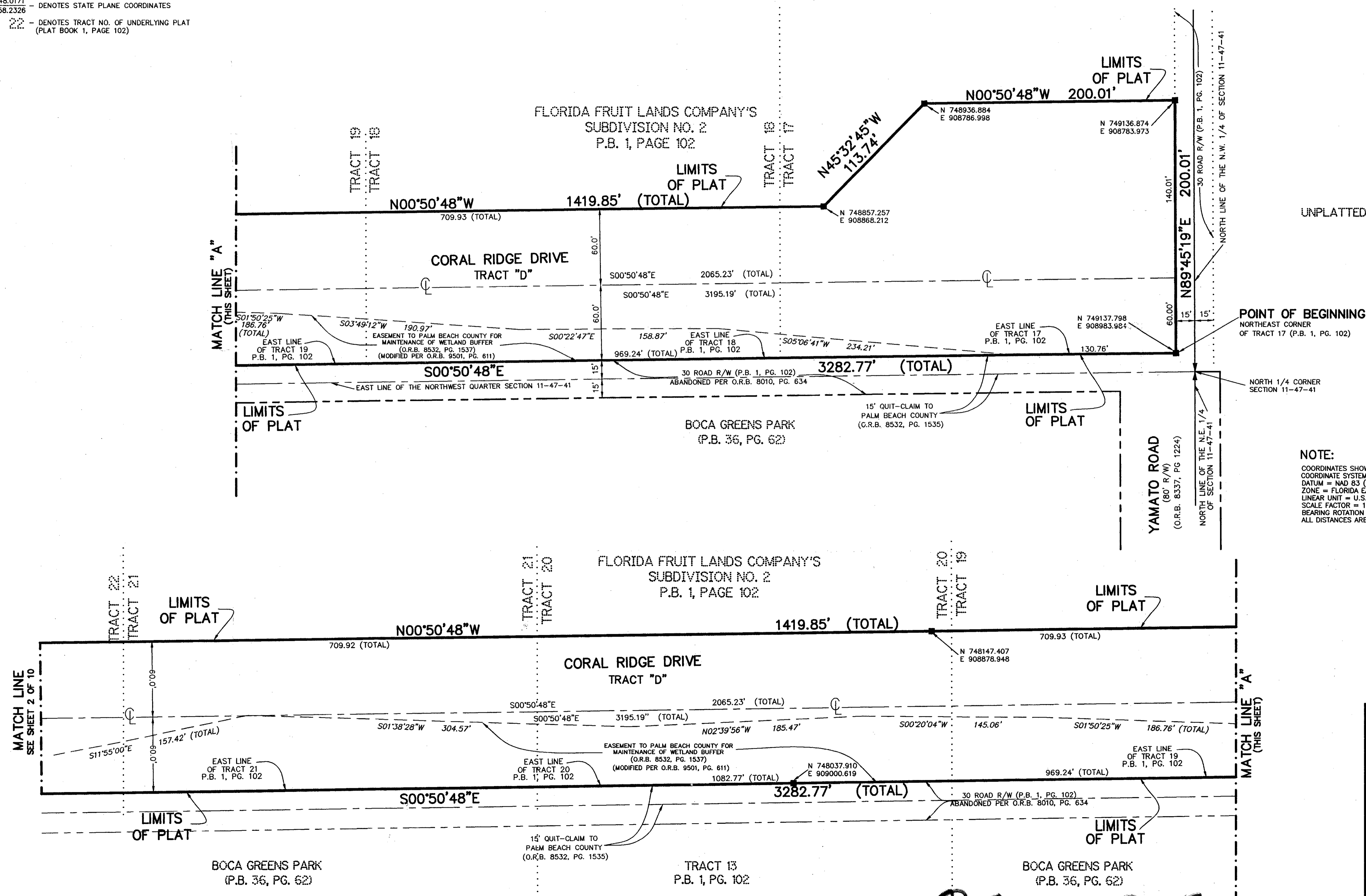
A REPLAT OF A PORTION OF TRACTS 17 THRU 28, INCLUSIVE, 33, 34, 47 AND 48 ACCORDING TO THE PLAT OF FLORIDA FRUIT LANDS COMPANY'S SUBDIVISION NO. 2 AS RECORDED IN PLAT BOOK 1, PAGE 102 OF THE PUBLIC RECORDS OF PALM BEACH COUNTY, FLORIDA, TOGETHER WITH AN ABANDONED 30 FOOT ROAD RIGHT OF WAY, ALL LYING IN SECTION 11, TOWNSHIP 47 SOUTH, RANGE 41 EAST. TOGETHER WITH A PORTION OF SECTION 10, TOWNSHIP 47 SOUTH, RANGE 41 EAST.

THIS INSTRUMENT PREPARED BY  
 PERRY C. WHITE, P.S.M. 4213, STATE OF FLORIDA  
 LAWSON, NOBLE AND WEBB, INC.  
 ENGINEERS PLANNERS SURVEYORS  
 WEST PALM BEACH, FLORIDA

SHEET 10 OF 10 FEBRUARY, 1997

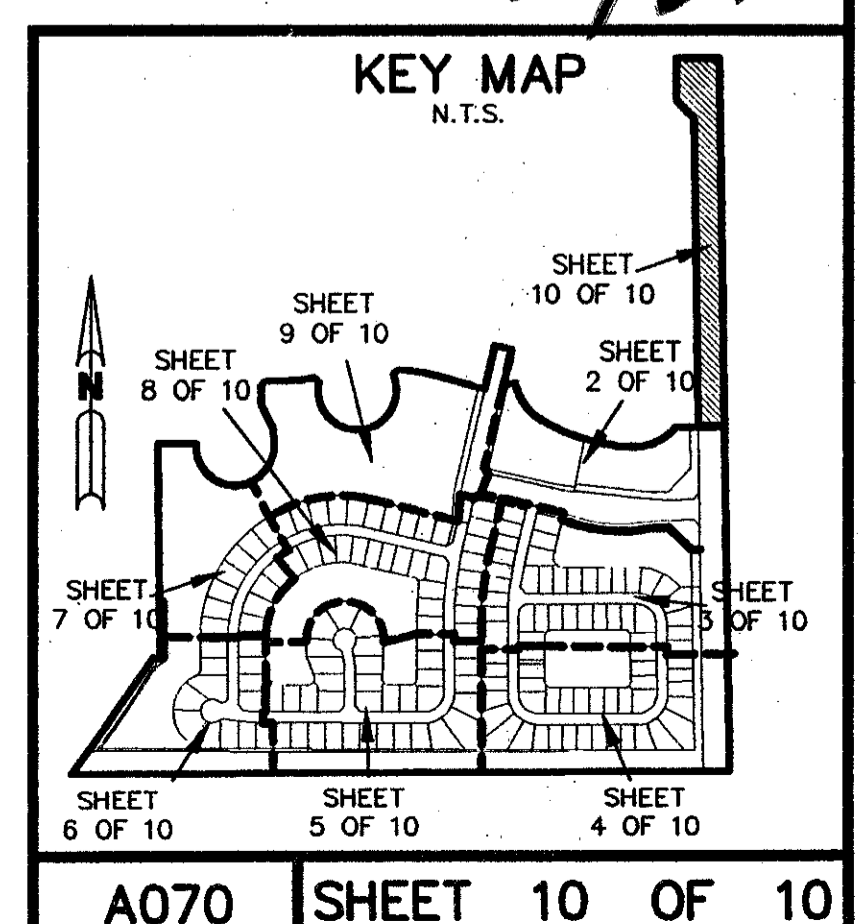


*Pet. 96-44  
 Alloc. #0001  
 5/3/3/M*



**NOTE:**  
 COORDINATES SHOWN ARE GRID COORDINATES  
 COORDINATE SYSTEM = 1983 STATE PLANE TRANSVERSE MERCATOR PROJECTION  
 DATUM = NAD 83 (1990 ADJUSTMENT)  
 ZONE = FLORIDA EAST ZONE  
 LINEAR UNIT = U.S. SURVEY FEET  
 SCALE FACTOR = 1.0000128  
 BEARING ROTATION = 0°01'11" COUNTERCLOCKWISE (PLAT TO GRID)  
 ALL DISTANCES ARE GROUND DISTANCES UNLESS OTHERWISE NOTED

SUBDIVISION # CAPELLA  
 BOOK 88 PAGE 88  
 FLOOD MAP #100  
 ZONING PD/JDR  
 QUAD # 44  
 ZIP CODE 33498  
 PUD NAME CAPELLA PLAT 1



0700-007